

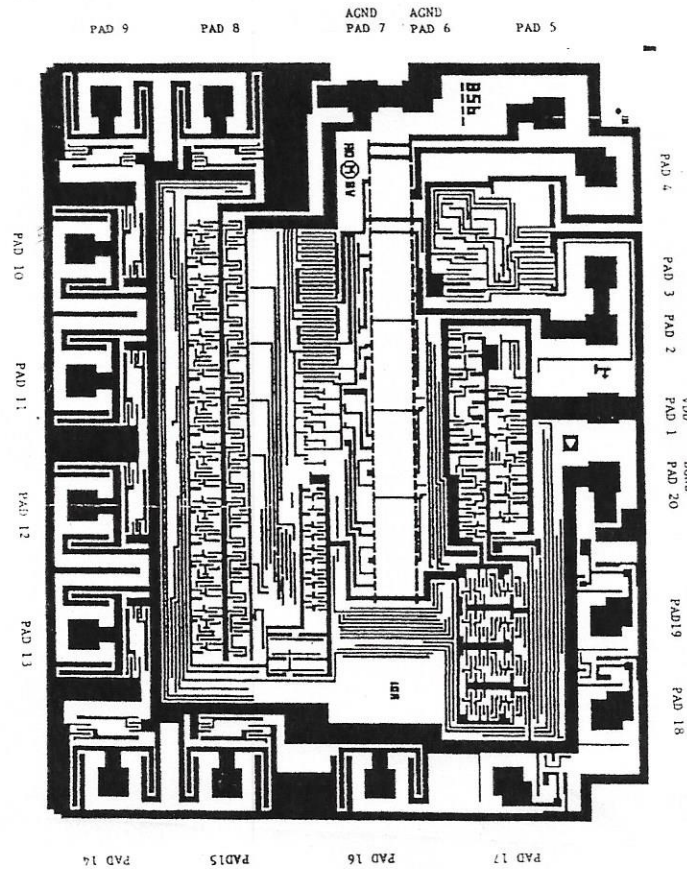


# Sierra Components, Inc.

2222 Park Place • Suite 3E • Minden, Nevada 89423

Phone: 775.783.4940 Fax: 775.783.4947

Chip back potential is the level which bulk silicon is maintained by on-chip connection, or it is the level to which the chip back must be connected when specifically stated below. If no potential is given the chip back should be isolated.



**Top Material: Al**  
**Backside Material: Silicon**  
**Bond Pad Size: .004" min.**  
**Backside Potential:**  
**Mask Ref:**

**APPROVED BY: DK**

**DIE SIZE .084 x .103"**

**DATE: 2/27/18**

**MFG: Analog Device**

**THICKNESS .015"**

**P/N: AD7574S**